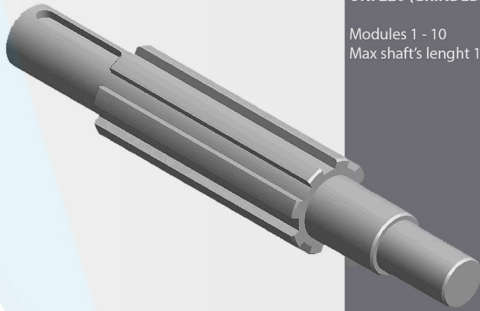




 **carini** industria
WORLD IN MOTION

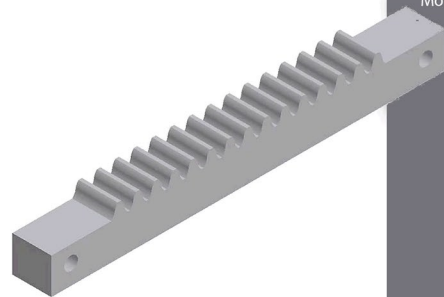
**SPLINED SHAFT UNI 221
UNI 220 (GRINDED)**

Modules 1 - 10
Max shaft's length 1200mm



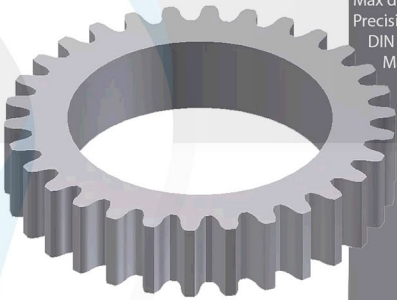
**STRAIGHT AND HELICOIDAL
TEETH RACKS**

Maximum helix's angle 30°
Modules 2 - 10
Max length 1800 mm



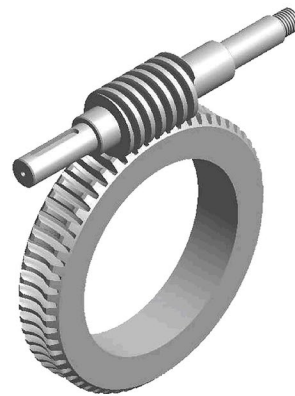
REIHAUER GRINDED GEARS

Modules 0.5 - 10
Max diameter 820 mm
Precision degree 3 - 4
DIN 3962
Max grade 5°
Max length tooled tooth
800 mm



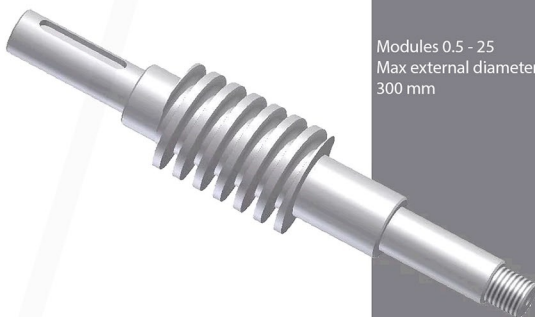
WORM WHEELS

Modules 1 - 12
External diameter 30 - 900
mm
Min wheelbase 130 mm
Teeth nr. 6 - 224



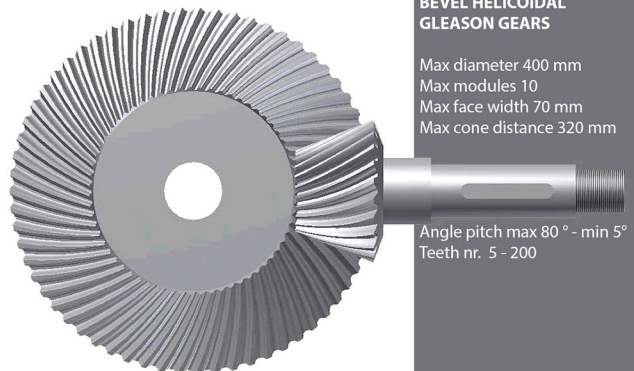
WORMS

Modules 0.5 - 25
Max external diameter
300 mm



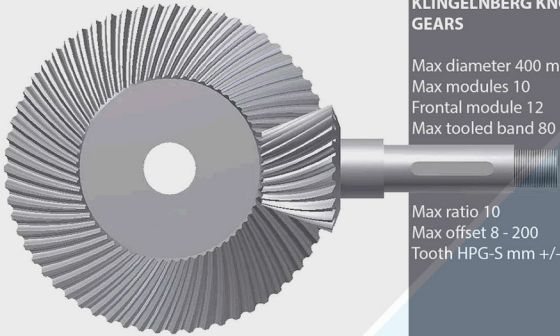
**BEVEL HELICOIDAL
GLEASON GEARS**

Max diameter 400 mm
Max modules 10
Max face width 70 mm
Max cone distance 320 mm



Angle pitch max 80° - min 5°
Teeth nr. 5 - 200

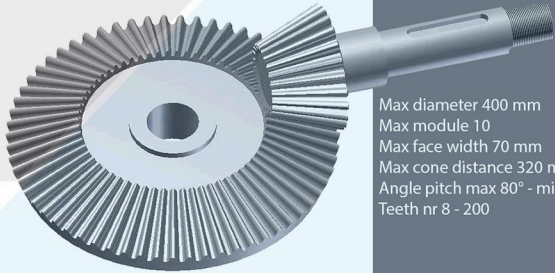
WHAT WE CAN DO



BEVEL SPIRAL KLINGENBERG KNC 40 GEARS

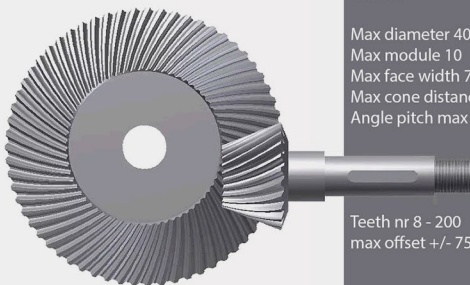
Max diameter 400 mm
Max modules 10
Frontal module 12
Max tooled band 80 mm

Max ratio 10
Max offset 8 - 200
Tooth HPG-5 mm +/- 60



BEVEL STRAIGHT GEARS

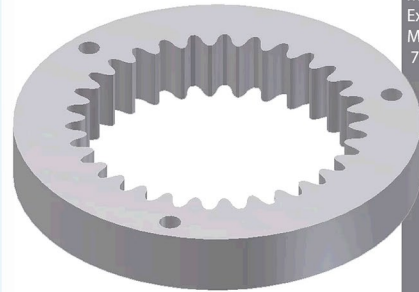
Max diameter 400 mm
Max module 10
Max face width 70 mm
Max cone distance 320 mm
Angle pitch max 80° - min 5°
Teeth nr 8 - 200



BEVEL GLEASON HYPOID GEARS

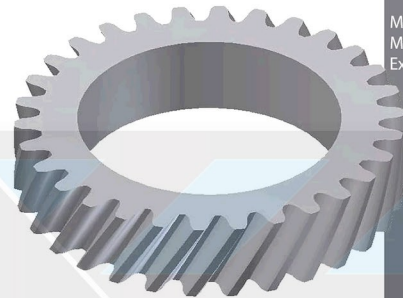
Max diameter 400 mm
Max module 10
Max face width 70 mm
Max cone distance 320 mm
Angle pitch max 80° - min 5°

Teeth nr 8 - 200
max offset +/- 75 mm



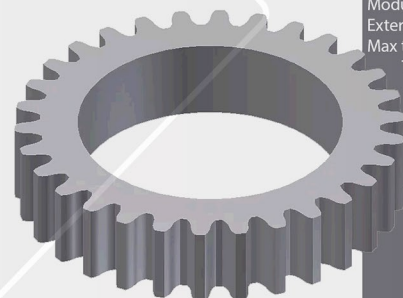
INTERNAL STRAIGHT TOOTHING

Modules 1 - 12
External diameter 20 - 400 mm
Max toothing diameter
70 mm



HELICOIDAL CYLINDRICAL GEARS

Max helix's angle 30°
Modules 0.5 - 200
External diameter 10 - 900 mm
Max tooth height 800 mm
Teeth nr 3 - 224



EXTERNAL STRAIGHT TEETH GEARS

Modules 0.5 - 12
External diameter 10 - 900 mm
Max tooth height 800 mm
Teeth nr. 3 - 224

OUR GROUP



PRECISION MECHANICS
ANGULAR GEARBOXES
GEARBOXES
POWER TRANSMISSION



STAINLESS STEELS MACHINING



BIG PARTS MACHINING



MACHINES FOR FOOD INDUSTRY



LASER CUTTING
FOR METAL PARTS



CARINI INDUSTRIA srl

Via Mafalda di Savoia 1, 29122 Piacenza, Italia

tel: +39 0523 615440 / 615445 fax: +39 0523 612348

mail: info@cariniindustria.it

www.cariniindustria.it